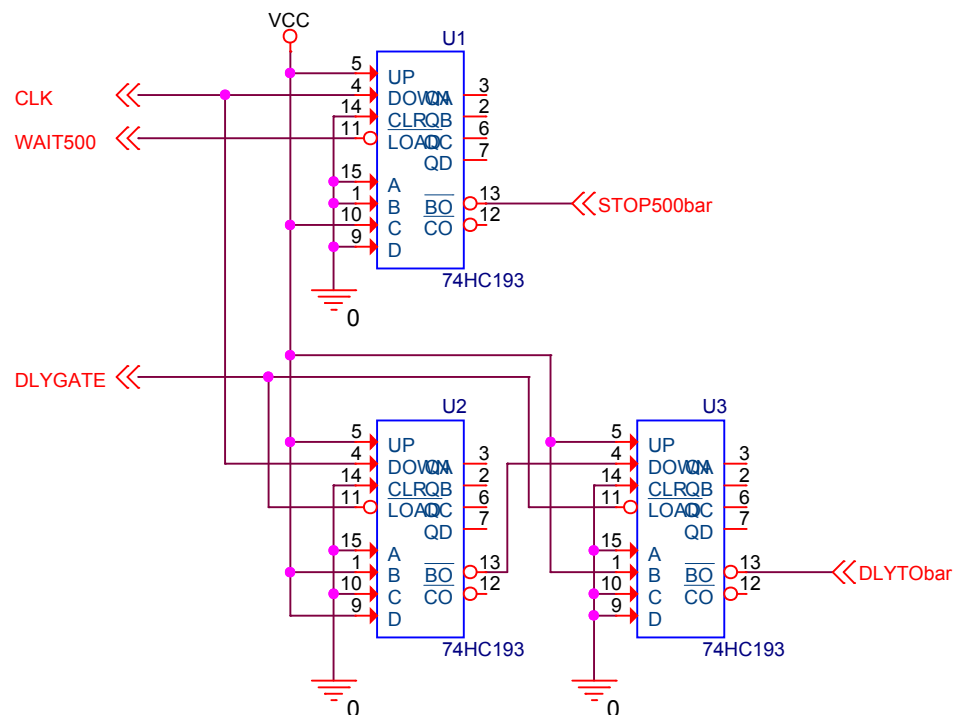
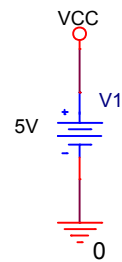
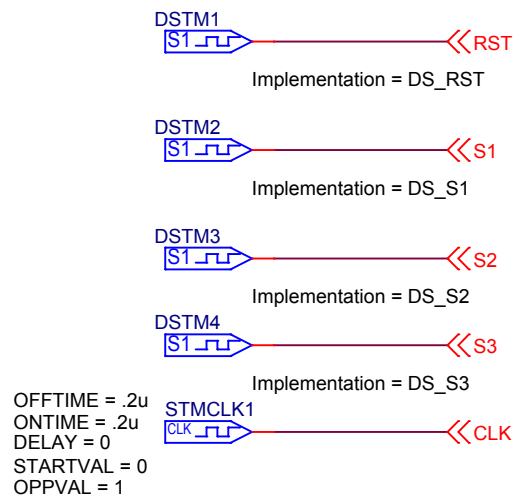


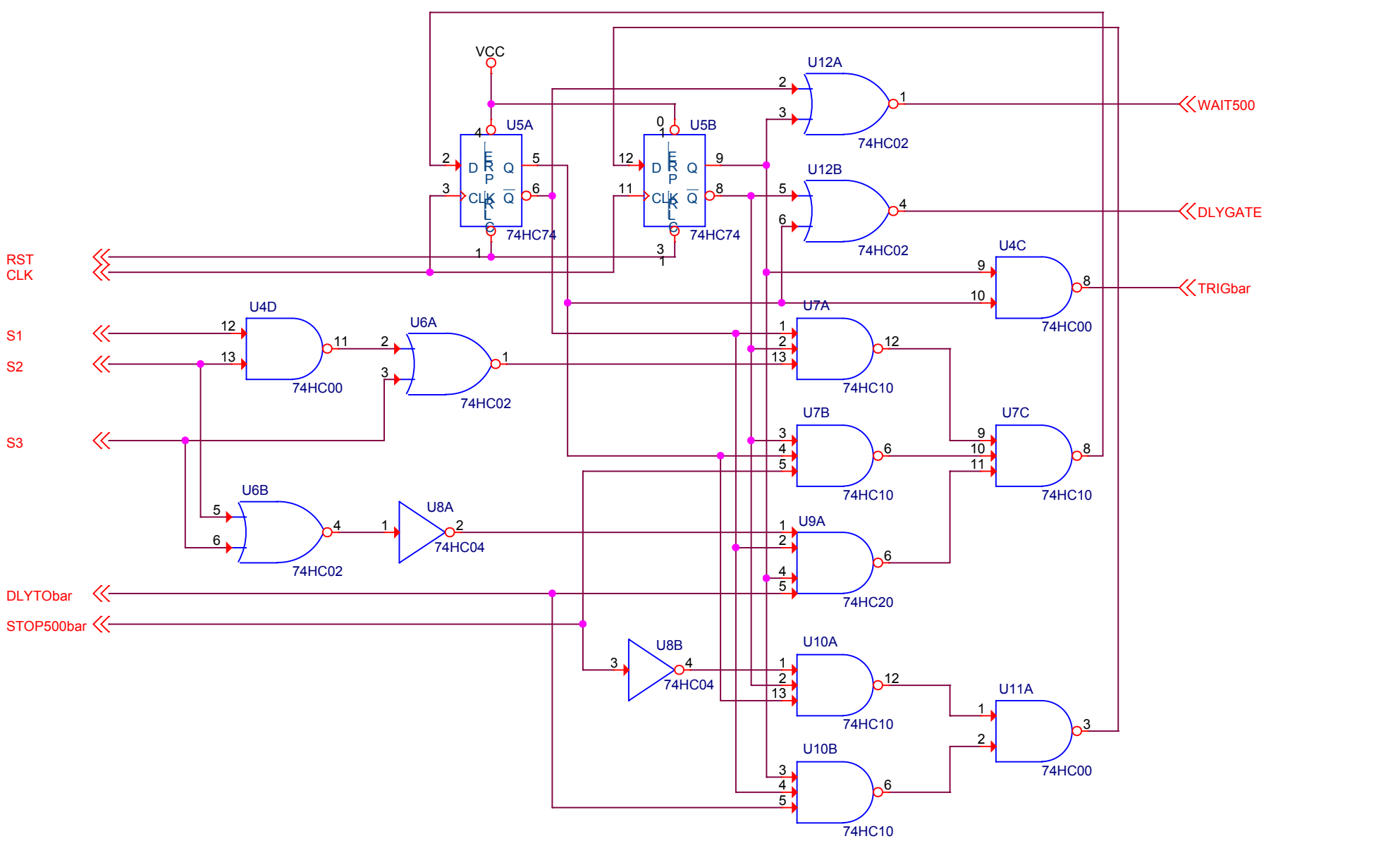
Use '193 LOAD' input to pin counter to load value during times when this state has not been selected by the TOP-level FSM. When the state is selected the 'LOAD' is pulled high for the period of that state. The counter counts until decrementing through 0 when 'BO' is asserted for 1/2 (!!) clock cycle. This is actually unfortunately limiting the maximum CLK frequency of this circuit to about 2.5 MHz



Title		
Binary Counters		
Size	Document Number	Rev
A	<Doc>	-
Date:	Monday, November 28, 2011	Sheet 1 of 3



Title		
Sources		
Size	Document Number	Rev
A	<Doc>	-
Date:	Monday, November 28, 2011	Sheet 1 of 3



Title		
FSM		
Size	Document Number	Rev
A	<Doc>	-
Date:	Monday, November 28, 2011	Sheet 1 of 3